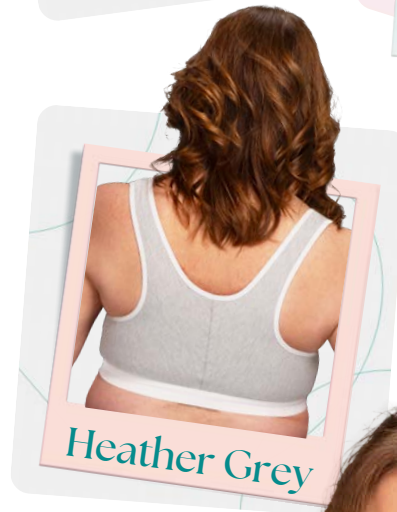


4060 Riley

Front Closure Bra
Seamless Cotton Stretch Soft Cup
Post-Surgery/Leisure Wear



Trulife's new 4060 Riley Bra is completely seamless, making it an excellent choice for post-surgery recovery and leisure wear. Featuring our durable and supportive 420 Kate band, designed to prevent band rollover.

Front Closure

Ideal for women with limited dexterity.

Combed Cotton Softness

Made from skin-friendly combed cotton, which is softer, more comfortable, and more absorbent than other cotton types.

Comfort

- Material has a vertical stretch vs lateral stretch, providing greater comfort and flexibility in the fit.
- Riley can be adjusted for size by using Trulife Bra Extenders.
- Featuring breathable, moisture-wicking COOLMAX® fabric pockets on both sides to ensure coolness and comfort throughout the day.

Model: 4060 Riley

Style: Seamless Cotton Stretch Soft Cup

Features: Front Closure

Sizing: 34 A/B to 44 A/B

34 C/D to 44 C/D

Colors: White, Heather Grey (White Trim)



SCAN
ME! >>>



Place Your Order Today!

www.trulife.com